

GYTPOL Validator

Server Installation – User Manual

Doc: GYT-TEC-006

Release: 02

Date: 16 April 2023

Confidential: GYTPOL and approved recipients

Doc. Title: GYTPOL Validator
Server Installation user manual

Doc. No.: GYT-TEC-006

Classification: Confidential

Revision: 02

Restriction: GYTPOL and approved recipients

Date: 16th April 2023

Customer:

Owner: Mark Zuk

**Reviewers/
Approvers:** Matthew Album
Gilad Raz
Tal Kollender

Author: Mark Zuk

@ GYTPOL Limited 2023. All rights reserved. PROPRIETARY AND CONFIDENTIAL.

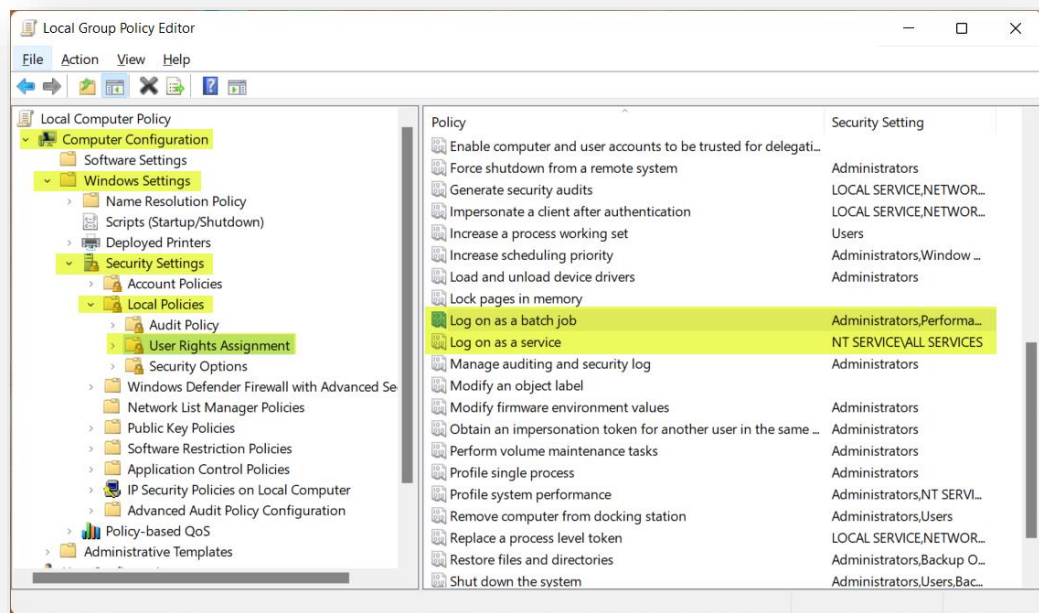
This document may include reference to technologies that use patents (pending or granted) which are owned by GYTPOL Limited or third parties. The use of such patents shall be subject to express written license terms. You shall not copy, disclose, reproduce, store in a retrieval system, or transmit in any form or by any means whether in whole or in part this document. GYTPOL Limited accepts no liability and offers no warranty in relation to the use of this document, or any technology referenced herein as well as associated intellectual property rights except as it has otherwise agreed in writing.

All trademarks and brands are the property of their respective owners, and their use is subject to license terms.

Once everything is ready and the server is set according to the System Requirements document, please follow the below steps to install GYTPOL Application server.

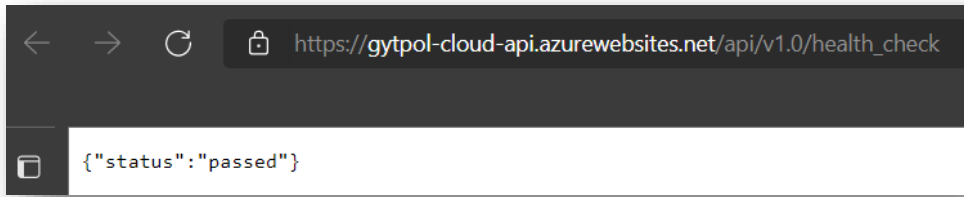
If you haven't prepared the server yet, please follow the below document prior to this guide: <https://gytpol.com/resource/system-requirements/>

1. Download the server and client files sent to you by GYTPOL team and place it on the GYTPOL server you created.
2. Open Local Group Policy Editor on the server (**gpedit.msc**) > Computer Configuration > Windows Settings > Security Settings > Local Policies > User Rights Assignment
3. Make sure that the GYTPOL app user is part of **Log on as a batch job** and **Log on as a service** privileges. If not, please add GYTPOL app user to these privileges.



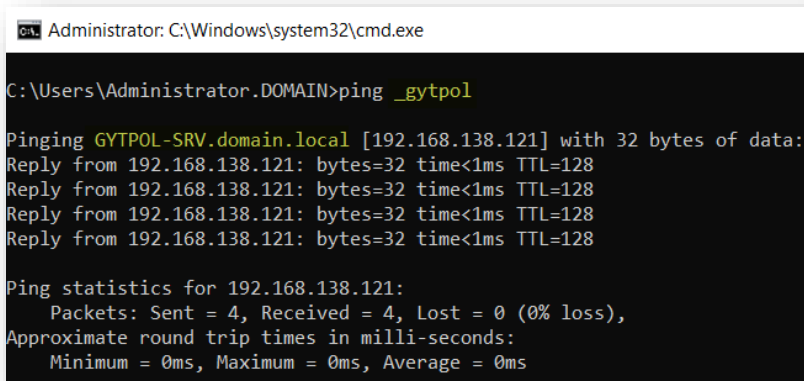
4. For customers that have the “**Remote Employees**” feature and cloud access, please check if the following URL is accessible and you get “**passed**” status:

https://gytpol-cloud-api.azurewebsites.net/api/v1.0/health_check

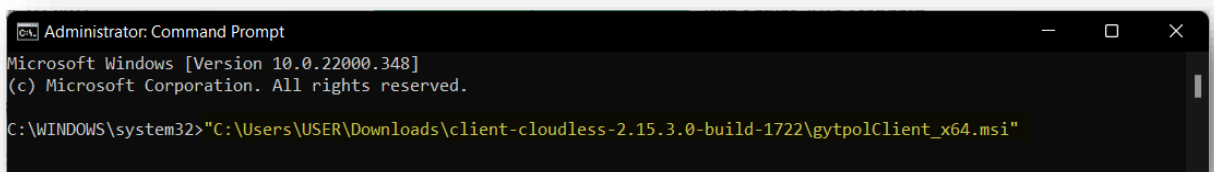


Note: in case of failed status, please make sure the needed URL are allowed as requested in the prerequisites document and you are not using any proxy.

5. Open CMD > **ping _gytpol** and see the result. It should reply with GYTPOL servers FQDN. Make sure it is correct.

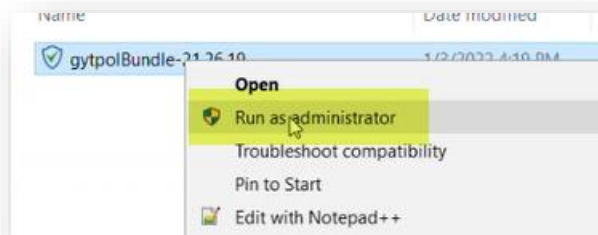


6. Please install the client on the server prior to the server installation. Extract the GYTPOL client zip and run the MSI installation from an elevated CMD (**as Administrator**) - once finished, the progress window will be disappeared.

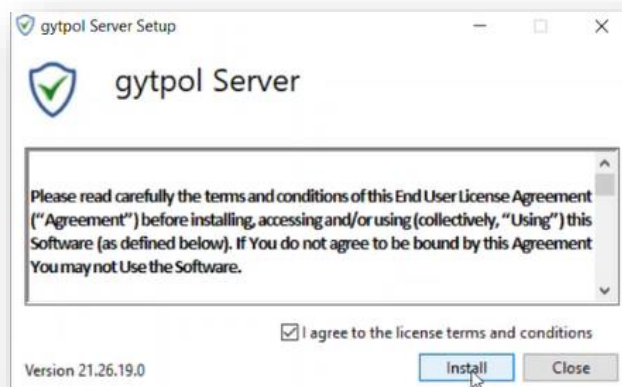


7. GYTPOL Server Installation:

Right Click on the server installation .exe file > **Run as Administrator**

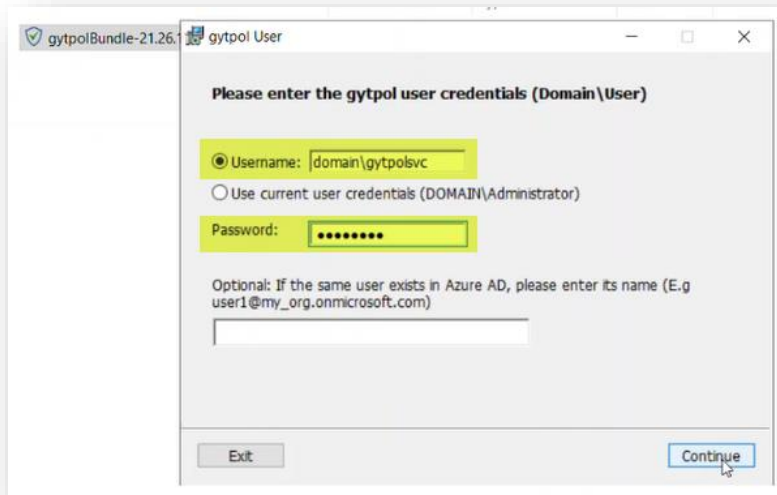


8. Once you read the EULA and ready to proceed, check “**I agree...**” and click **Install**

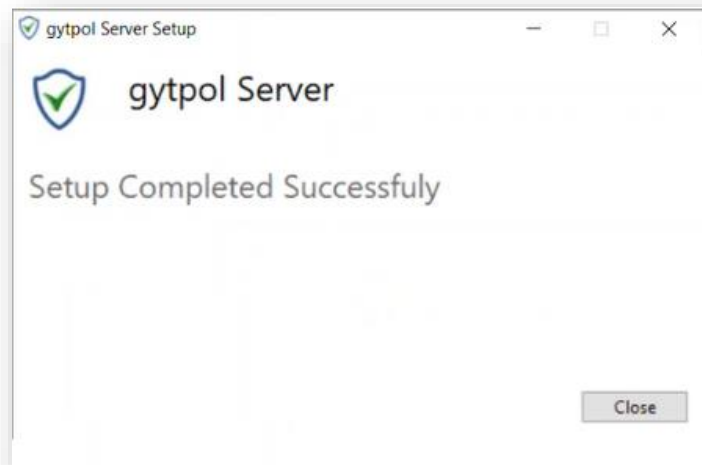


9. For POCs and deployments up to 4000 endpoints (servers and computers)
> select **Typical** and **Continue**

10. Once prompted for GYTPOL user credentials, please type
<**YOURDOMAIN \ GYTPOLUSER**> in **Username** and **Password** fields on the
screen > **Continue**

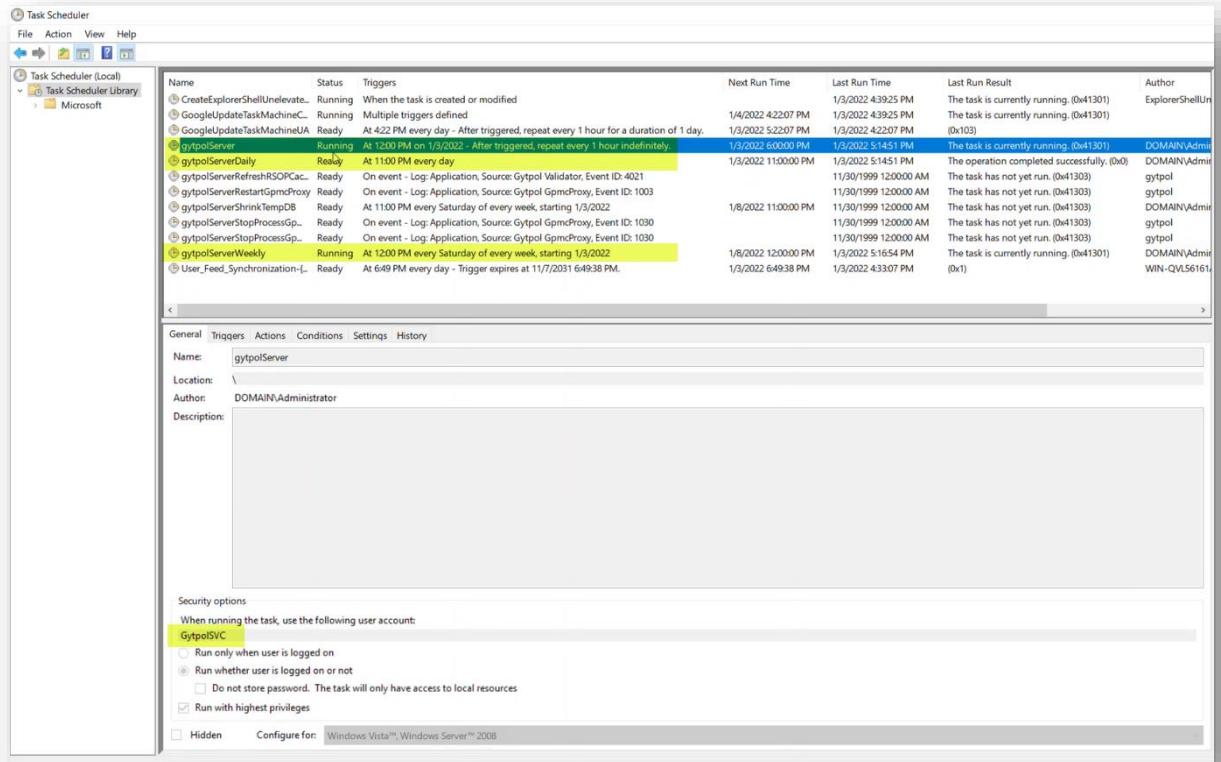


11. Once finished, please click **Close**



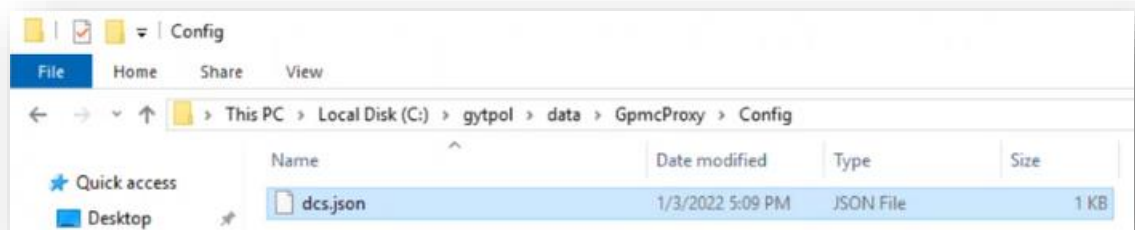
In the next steps, we will verify that the installation was completed without any issues or errors.

12. Please open Task Scheduler and make sure you can see the **gytpolServer** tasks (GytpolServer, GytpolServerDaily, GytpolServerWeekly) and at least one of them is running.

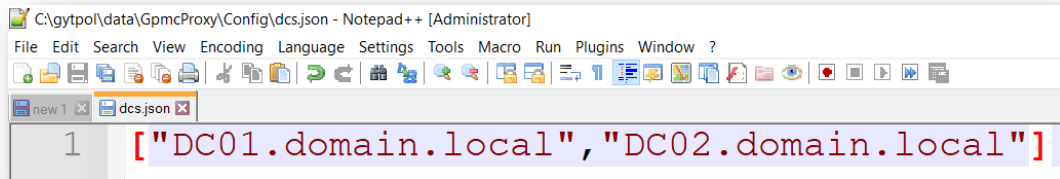


13. Navigate to **c:\gytpol\data\GPMcProxy\config\dcs.json** and make sure that the Domain Controllers you see in the file are located on the Main Site of your Active Directory and are in the same domain as your GYTPOL server.

Note: We suggest to open the json files using Notepad++



In the example, we have only 2 Domain Controllers on the Main Site and they both shown in the json file.

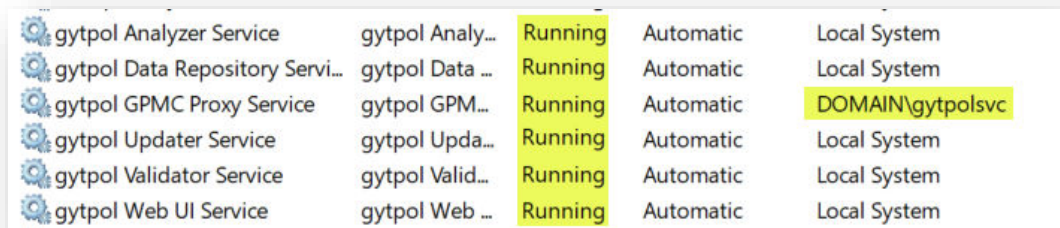


```
C:\gytpol\data\GpmcProxy\Config\dcs.json - Notepad++ [Administrator]
File Edit Search View Encoding Language Settings Tools Macro Run Plugins Window ?
new 1 x dcs.json x
1 ["DC01.domain.local", "DC02.domain.local"]
```

Note: In case of any changes in the json file (for example, add or remove DCs), please keep the file in Comma Delimiter format, as shown in the example.

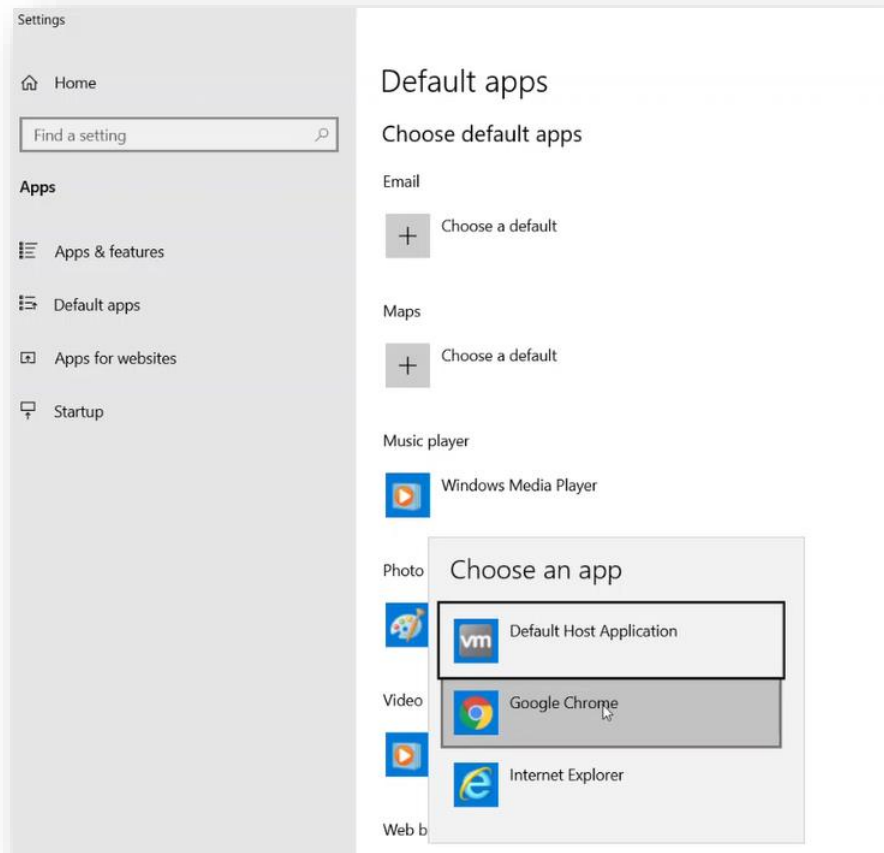
After any change, please open **System Services** and restart **gytpol GPMCPROXY** service, **gytpol data repository** service and **gytpol Validator** service.

14. Please open **System Services** and validate that all **GYTPOL** services are up and running and the **GPMC PROXY** is running with GYTPOL user credentials (for **Group Policy Modeling**).

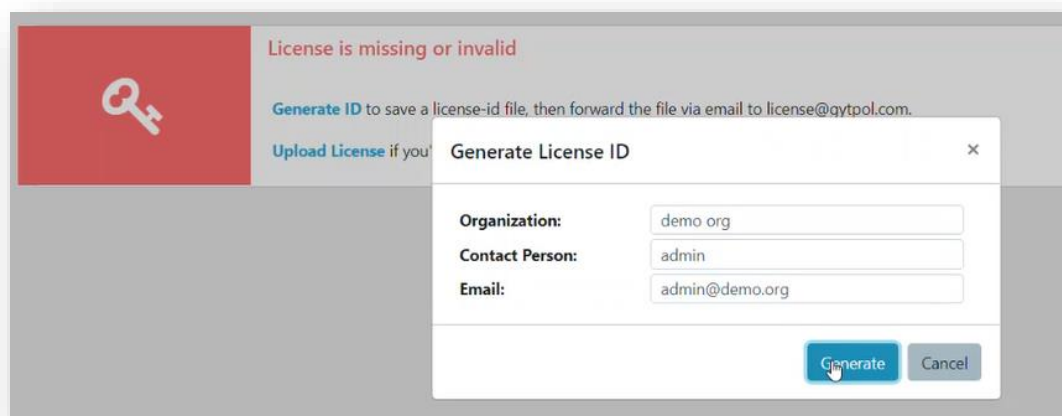


gytpol Analyzer Service	gytpol Analy...	Running	Automatic	Local System
gytpol Data Repository Servi...	gytpol Data ...	Running	Automatic	Local System
gytpol GPMC Proxy Service	gytpol GPM...	Running	Automatic	DOMAIN\gytpolsvc
gytpol Updater Service	gytpol Upda...	Running	Automatic	Local System
gytpol Validator Service	gytpol Valid...	Running	Automatic	Local System
gytpol Web UI Service	gytpol Web ...	Running	Automatic	Local System

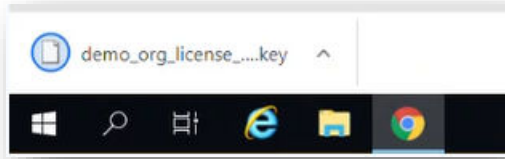
15. Please open **Default Apps** on the server and set **Google Chrome** (version 88 and above are supported, but the latest version is preferred) of the **new Edge** as your default web browser.



16. Double click **gytpol Validator** link on your desktop to access the dashboard
17. Once opened, you will be prompted for the License.
18. Click on Generate ID and fill the form with your details:



When you click Generate, a key file will be downloaded.



19. Please email it to license@gytpol.com and once processed, the new key file will be sent to you. Save the file on the GYTPOL server.
20. Open the gytpol Validator UI from the link on the desktop and click Upload License. Navigate to the key file you received from GYTPOL license team and upload it to the server.
21. That's it – You are ready to go! We can now move to the client installation and deployment.