

# **GYTPOL Validator**

## **System Requirements**

**Doc: GYT-TEC-003**

**Release: 16**

**Date: 27<sup>th</sup> December 2021**

Confidential: GYTPOL and approved recipients

**Total pages:** 2828

**Doc. Title:** GYTPOL Validator  
System Requirements

**Doc. No.:** GYT-TEC-003

**Classification :** Confidential

**Revision:** 16

**Restriction:** GYTPOL and approved recipients

**Date:** 27<sup>th</sup> Dec 2021

**Customer:**

**Owner:** Tal Kollender

**Reviewers/ Approvers:** Matthew Album  
Gilad Raz  
Tal Kollender

**Author:** Tal Kollender

@ GYTPOL Limited 2021. All rights reserved. PROPRIETARY AND CONFIDENTIAL

This document may include reference to technologies that use patents (pending or granted) which are owned by GYTPOL Limited or third parties. The use of such patents shall be subject to express written license terms. You shall not copy, disclose, reproduce, store in a retrieval system, or transmit in any form or by any means whether in whole or in part this document. GYTPOL Limited accepts no liability and offers no warranty in relation to the use of this document, or any technology referenced herein as well as associated intellectual property rights except as it has otherwise agreed in writing.

All trademarks and brands are the property of their respective owners, and their use is subject to license terms.

## Contents

Introduction	5
Checklist	5
System Architecture	6
Server Architecture	6
Server Sizing	7
OS	7
Users and Groups	8
Permissions	8
Server Software	9
User Interface	9
Client Requirements	9
DNS	10
Ports	11
Antivirus	12
Appendix: Detailed Configuration Instructions	13
How to check if Windows Firewall is at 'off' state	13
How to Check if IPv6 is disabled	14
How to Disable Internet Explorer Enhanced Security Configuration	15
How to Disable User Account Control (UAC)	16
How to Disable Proxy Settings	17
How to Check PowerShell Version and Restriction Mode	18
How to Test Permissions	19
Add the GYTPOL user to the Domain group: "Performance Log Users"	21
Adding a local admin	21
Logon as a service	22
Logon as a batch job	22
DB Creator	23

GPMC Permission	24
Active Directory Delegation – Group Policy Permission	24
Active Directory Delegation – AD Replication Permissions	25
Group Policy Links Permissions	27

## Introduction

The purpose of this document is to provide the system requirements and pre-requisites before installing the GYTPOL Validator product.

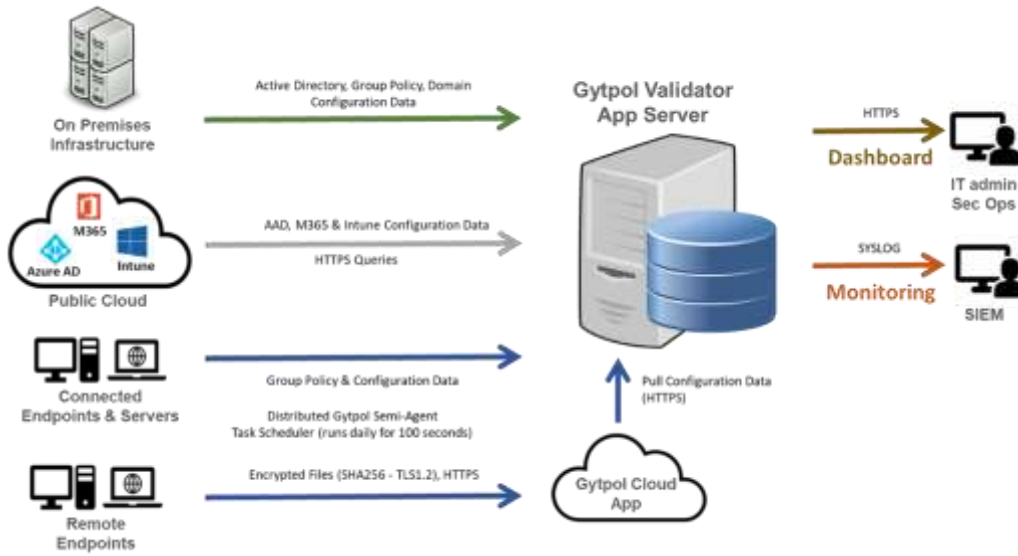
## Checklist

Verify all the following GYTPOL requirements are met prior to installation of the GYTPOL Validator software:

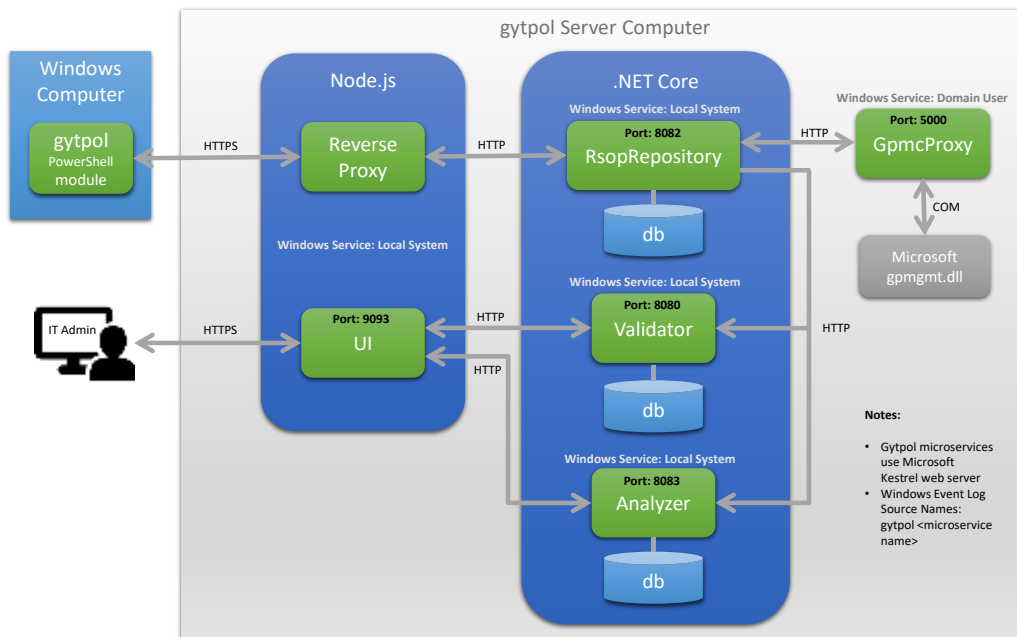
- [OS](#) – for the GYTPOL Server
- [Server Sizing](#) – based on number of users and computers
- [Users and Groups](#) – in Active Directory and the GYTPOL Server
- [Server Software](#) – for the GYTPOL Server
- [User Interface](#) – web browser for the end user of GYTPOL Validator
- [Client Requirements](#) – for servers and workstations covered by GYTPOL Validator
- [DNS](#) – additions for proper routing to GYTPOL Server
- [Ports](#) – what ports should be open on the server and the client side
- [Antivirus](#) – prevent blocking GYTPOL Validator from proper execution

Find additional help in [Appendix: Detailed Configuration Instructions](#) when required.

## System Architecture



## Server Architecture



## Server Sizing

### Up to 5,000 Devices / PoC

RAM (GB)	System Storage (GB)	CPU (# Cores)
16	80	8

### Up to 10,000 Devices

Server	RAM (GB)	Storage (GB)	CPU (# Reserved Cores)
GYTPOL	16	80	8
DB	24	200	8

### Up to 15,000 Devices

Server	RAM (GB)	Storage (GB)	CPU (# Reserved Cores)
GYTPOL	24	80	8
DB	24	250	8

**More than 15,000 devices – Please contact us for sizing**

## OS

- Dedicated physical or virtual server (Windows Server 2016/2019 (Standard)).
- For Customers with separate DB server, please install SQL Server 2016 and above.

**NOTE: SET DB TO RECOVERY MODE TO SIMPLE**

## Users and Groups

### Permissions

Follow the table to set the permissions regarding the user and the group:

Type	Name	Permission set
AD + AAD User	GytpolSvc	<p>On the GYTPOL Server (follow hyperlinks for how to's):</p> <ul style="list-style-type: none"><li>• <a href="#">Member of Domain Group: "Performance Log Users"</a></li><li>• <a href="#">Local admin on GYTPOL server</a></li><li>• <a href="#">Logon as a service</a></li><li>• <a href="#">Logon as a batch job</a></li></ul> <p><a href="#">GPMC permissions</a> <a href="#">AD Replication permissions</a></p> <p><b>In case of using Azure AD:</b> Add the user to ALL READER GROUPS, <b>like: Global Reader + Security Reader + Compliance Reader</b></p>
AD Security Group	GytpolAdmins	<ul style="list-style-type: none"><li>• GytpolSvc user should be a member of this group</li><li>• Add members that should have access to Validator dashboard</li></ul>

Follow the [How to Test Permissions](#) instructions.



## Server Software

Requirement	How to Verify
<b>Web Browser supports Chromium</b>	Chromium for Edge or Google Chrome version 86 or higher
<b>.NET 4.7.2 installed</b>	(Installed by default on Server 2019)
<b>Notepad++ installed</b>	<a href="https://notepad-plus-plus.org/downloads/">https://notepad-plus-plus.org/downloads/</a>
<b>PowerShell minimum version is 5.1</b> Make sure the PowerShell scripts is not set to "Restricted" in any of its category	(Installed by default on Server 2016 and 2019)  <a href="#">How to Check PowerShell Version and Restriction Mode</a>
<b>IPv6 disabled</b>	<a href="#">How to Check if IPv6 is disabled</a>
<b>Windows Firewall is at 'off' state</b> (service should be up and running)	<a href="#">How to check if Windows Firewall is at 'off' state</a>
<b>IE enhanced disabled</b>	<a href="#">How to Disable Internet Explorer Enhanced Security Configuration</a>
<b>UAC disabled</b>	<a href="#">How to Disable User Account Control (UAC)</a>
<b>Proxy is not configured</b>	<a href="#">How to Disable Proxy Settings</a>
<b>After committed changes - restart the remote machine</b>	

## User Interface

- Physical or virtual machine running at least Windows 7 SP1
- Chrome browser running version 80 or later (or MS Chromium Edge)

## Client Requirements

- Task Scheduler enabled for both user and computer

- Event viewer enabled for user and computer
- RSOP allowed
- PowerShell 2.0 or later
  - Recommended: if PowerShell scripts are Restricted, set PowerShell scripts to: “All Signed” (or anything besides “Restricted” or “Remote Sign”, preferred: via GPO)
  - Enable running PS scripts to users

## DNS

From a server running DNS (or an IT admin computer):

- Press Start and type Powershell → click on the Windows PowerShell
- Type **dnsmgmt.msc**
- Navigate to the tree name of the organization
- Right click on the tree name → Add **CNAME** Record
- In the name value type **\_Gytpol**
- In the CNAME record click Search and drill down to the tree level where GYTPOL server dns name is written and select it → click OK
- Review the results and click OK
- Testing the record:
  - Click start → type cmd → double click to open the cmd windows
  - Type: ping \_Gytpol
  - Make sure you get the same IP as GYTPOL server

```
C:\Windows\system32>ping _gytpol
Pinging _gytpol [192.168.35.77] with 32 bytes of data:
```

## Ports

From	To	Port number	Purpose
All Computers	GYTPOL Proxy Server	9093  9090 (Windows7 only)	HTTPS  HTTP (data is compressed and encrypted)
All Computers	GYTPOL Cloud Service <u>EMEA &amp; Asia:</u> <a href="https://Gytpol-cloud-api.azurewebsites.net/api/v1.0">https://Gytpol-cloud-api.azurewebsites.net/api/v1.0</a>  <u>Americas:</u> <a href="https://gytpol-cloud-api-us-func.azurewebsites.net/api/v1.0/health_check">https://gytpol-cloud-api-us-func.azurewebsites.net/api/v1.0/health_check</a>	443	HTTPS (Automatic updates and Remote Employees) – In case GYTPOL cloud service connection is desired
GYTPOL Validator Server	GYTPOL Database (required for deployments over 5,000 devices)	1433, 1434	SQL queries
GYTPOL Validator Server	DC's	389, 9389, 636, 135, 138-139, 445, 464, 53, 3268, 3269 +  Dynamic ports (49152-65535)	GP PS queries +  GP modeling queries

GYTPOL Validator Server	GYTPOL Cloud Updates <u>EMEA &amp; Asia:</u> <a href="https://Gytpol-cloud-api.azurewebsites.net/api/v1.0">https://Gytpol-cloud-api.azurewebsites.net/api/v1.0</a> <u>Americas:</u> <a href="https://gytpol-cloud-api-us-func.azurewebsites.net/api/v1.0/health_check">https://gytpol-cloud-api-us-func.azurewebsites.net/api/v1.0/health_check</a>	443	HTTPS (Automatic updates and Remote Employees data pulling) – In case GYTPOL cloud service connection is desired
GYTPOL Validator Server	Azure (including: AD, M365, InTune)	80, 443	HTTP + HTTPS
IT Admin Computers	GYTPOL Server	3389 9093	RDP UI – HTTPS

## Antivirus

Exclude the following directories in the AV for GYTPOL server:

- (Gytpol installation directory – i.e. 'C' or 'D' drive):  
 LOCAL SERVER\ (Local Drive) \Gytpol

## Appendix: Detailed Configuration Instructions

### How to check if Windows Firewall is at 'off' state

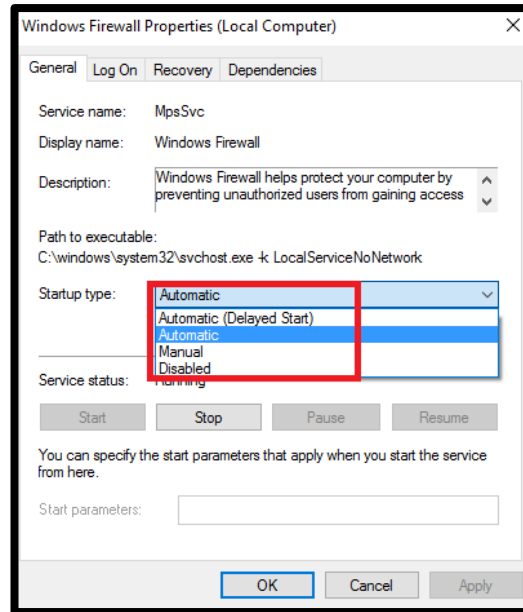
1. On GYTPOL server click on "Start" and type Powershell □ click on "Windows PowerShell"
2. Type firewall.cpl
3. Make sure the following components are set to "off" (red X):
  - Domain networks
  - Private networks
  - Guest or public networks



4. In case at least one on them is set to "on" (Green)
  - a. Click on "Turn Windows Firewall on or off" and change all of the tabs to "off"
5. Type services.msc
6. On the right pane, find the service Windows Firewall and make sure the service is set to Automatic and is running



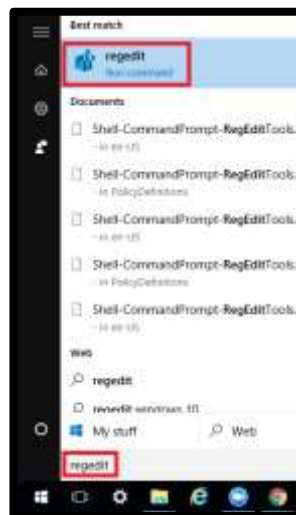
7. If the service is set to stopped and the Startup type is disabled:
  - a. Double click on the service and change the startup type to Automatic, click on the Start button and wait for the service to start. After it is done click OK



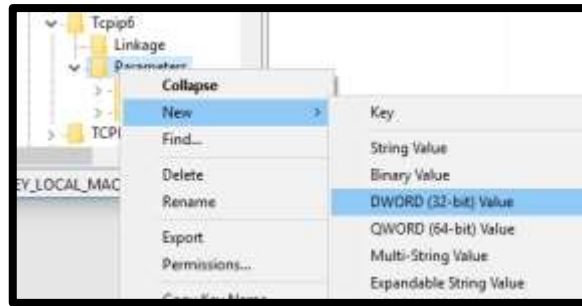
- b. If it is unable to change – check the Group Policy in a case the Windows Firewall service is Disabled

## How to Check if IPv6 is disabled

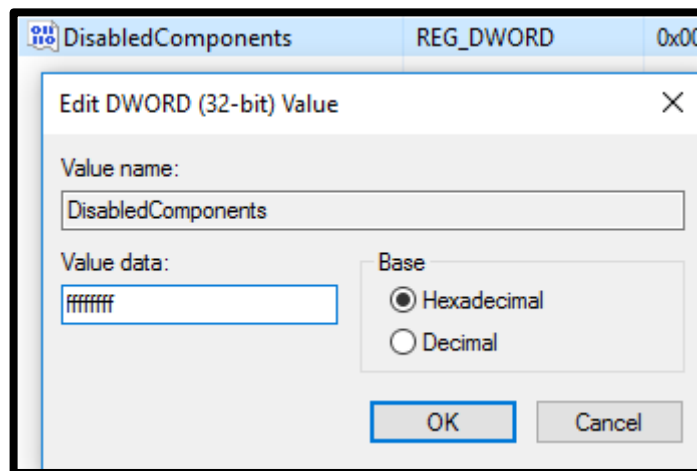
1. In the GYTPOL server, click on the Start button and type regedit and select the regedit icon:



2. Navigate to HKEY\_LOCAL\_MACHINE \ SYSTEM \ CurrentControlSet \ Services \ TCPIP6 \ Parameters
3. Right click on Parameters \ New \ DWORD (32-bit) Value

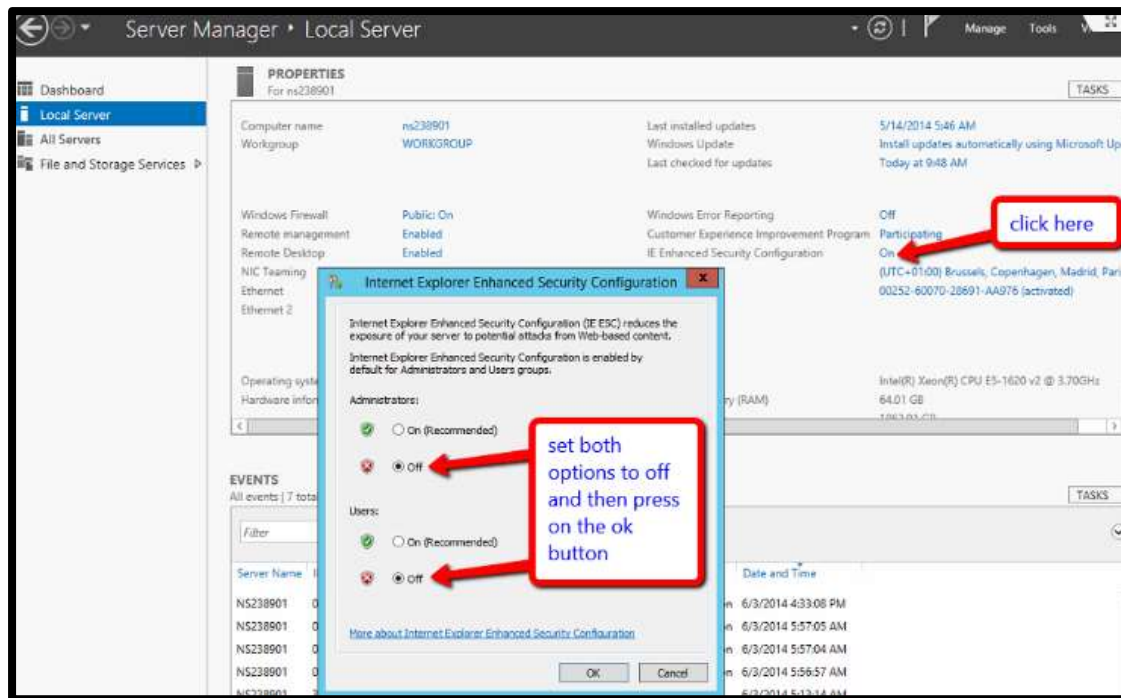


4. Replace the New Value #1 with DisabledComponents
5. Double click on **DisabledComponents** and set the value to **ffffff** and press OK



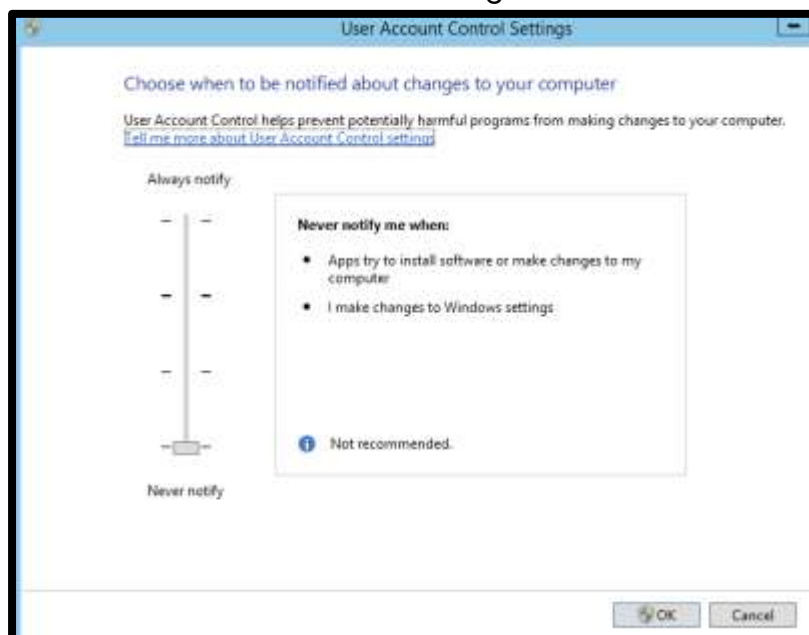
## How to Disable Internet Explorer Enhanced Security Configuration

1. On GYTPOL server click on "Start" and search for Server Manager
2. When the console loads go to Server Manager > Local Server
3. In the Properties section, scroll to the right until you see this option: IE Enhanced Security Configuration, and toggle the setting to Off
4. In the Internet Explorer Enhanced Security Configuration window, disable the IE ESC for Administrators and Users, and click OK



## How to Disable User Account Control (UAC)

1. On GYTPOL server click on "Start" and search for Control Panel
5. When the Control Panel opens □ Click System Security
6. Under Action Center, choose Change User Account Control settings
7. Move the slider bar **down** to the **Never notify** selection and click OK
8. Reboot the machine for changes to take effect

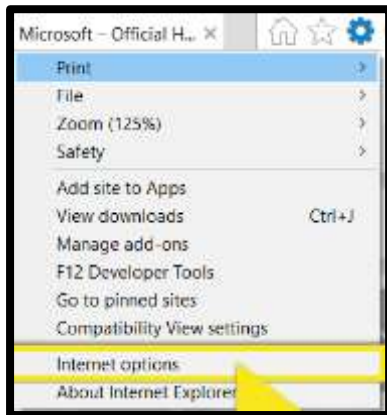




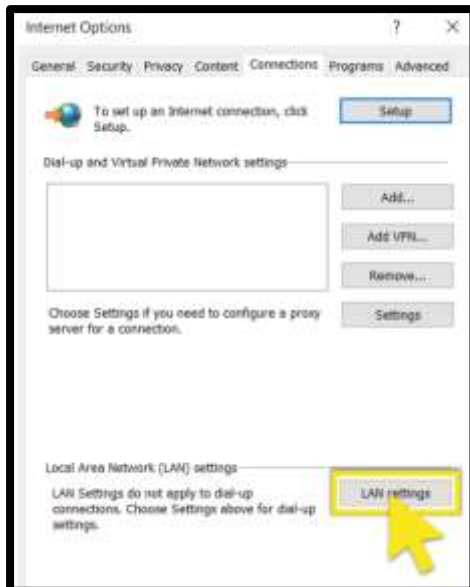
## How to Disable Proxy Settings

1. On GYTPOL server click on “Start” and search for Internet Explorer
2. When the Internet Explorer loads □ Click the Tools button and then select

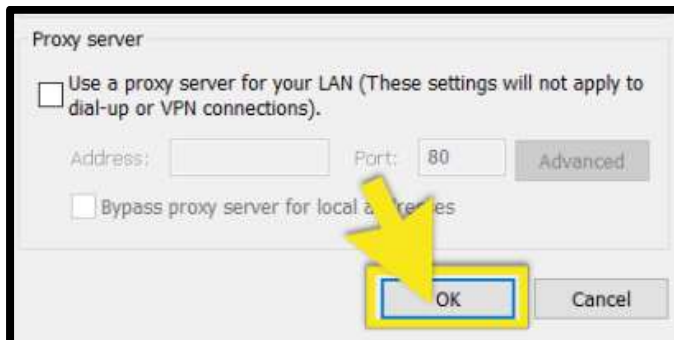
### Internet Options



3. Click the **Connections** tab and then select **LAN settings**



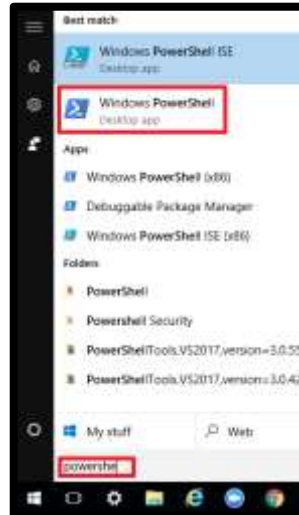
4. Uncheck the check box for Use a proxy server for your LAN



5. Press OK □ OK □ OK

## How to Check PowerShell Version and Restriction Mode

1. On GYTPOL server click on “Start” and type Powershell → click on “Windows PowerShell”



2. In the WindowsPowerShell window type: **\$PSVersionTable.PSVersion**

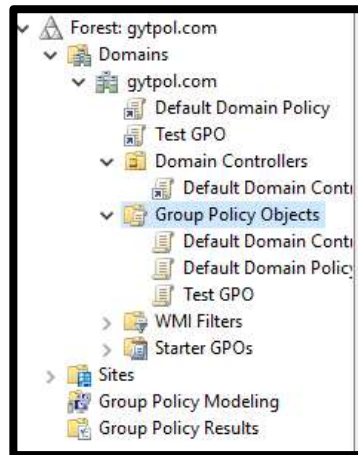
```
PS C:\Users> $PSVersionTable.PSVersion
Major Minor Build Revision
-----
5      1      17134  765
```

3. Make sure the Major is set to 5 (or above) and the Minor is set to 1 (or above)
4. Make sure the PowerShell scripts is not set to “Restricted” in any of its category: in the same PowerShell windows type: **Get-ExecutionPolicy -List**

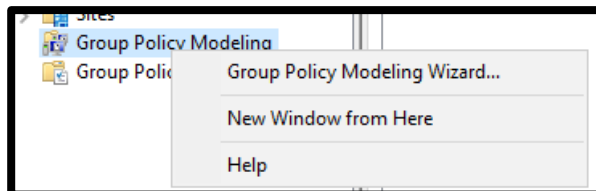
```
PS C:\Users\kollet\Google Drive\gytpol_POC\OpenU> Get-ExecutionPolicy -List
Scope ExecutionPolicy
-----
MachinePolicy Undefined
UserPolicy Undefined
Process Undefined
CurrentUser Undefined
LocalMachine Unrestricted
```

## How to Test Permissions

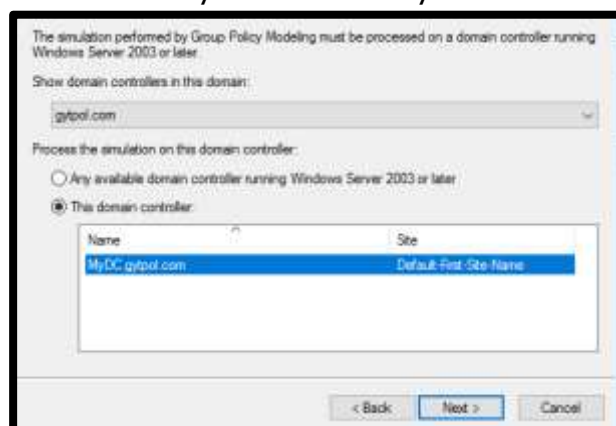
1. Open GPMC.MSC with the user created under section (2)
2. Navigate to “Group Policy Objects” and make sure you see all of the items:



3. If you don't see the items, open GPMC as administrator and go to Group Policy Objects
  - o On the right screen go to Delegation
  - o Click “Add..” and choose “Gytpolsvc” □ OK
4. Navigate to “Group Policy Modeling” and simulate scenario:
  - o Right click on the “Group Policy Modeling” □ Group Policy Modeling Wizard



- o Click next □ Choose your domain + your PDC server and click next



- o Under “User Information” – select “User:” and “Browse..” your username, and under “Computer Information” – select “Computer:” and “Browse..” your computer name □ Click next

Example container name: CN=Users,DC=gytpol,DC=com  
Example user or computer: GYTPOL\Administrator

Simulate policy settings for the following:

User information

Container:

User:

Computer information

Container:

Computer:

Skip to the final page of this wizard without collecting additional data

< Back  Cancel

- Select “Loopback processing” – choose “Replace” and under “Site:” – select your site name □ Click next

Simulate policy implementation for the following:

Slow network connection (for example, a dial-up connection)

Loopback processing

Replace

Merge

Site:

Skip to the final page of this wizard without collecting additional data

< Back  Cancel

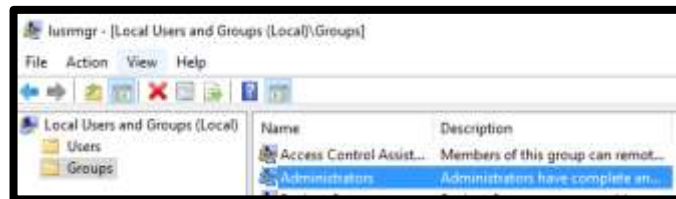
- Continue clicking next until the wizard is finished and review the results

## Add the GYTPOL user to the Domain group: “Performance Log Users”

1. From a computer running RSAT (aka Active Directory tools) open cmd
2. Open Active Directory Users and Computers: type `dsa.msc` and press ENTER
3. Search the Active Directory for the group “Performance Log Users”
4. Double click on the group and go to Members → Add.. → type the name of GYTPOL user (you created earlier) and press OK → OK → OK

## Adding a local admin

5. On **GYTPOL server** open cmd
6. Type: **lusrmgr.msc**
7. On the left pane select Groups, on the right pane double click on Administrators



8. Click “Add..”



9. Make sure “From this location:” is set to the domain name and not the GYTPOL server
10. Under “Enter the object names to select” type `gytpoSvc` → click on “Check Names” and wait until you see the name with underline and with the domain name and press OK

## Logon as a service

1. If there are no Group Policies with “logon as a service” restrictions, you might leave it as it is
  - 1.1. Go to a server where GYTPOL is installed
  - 1.2. Open cmd as administrator and type **gpedit.msc**
  - 1.3. Navigate to Computer Configuration ▸ Windows Settings ▸ Security Settings ▸ Local Policies ▸ User Right Assignment
  - 1.4. Double click on “Log on as a service”
  - 1.5. Click on “Add User or Group”
  - 1.6. Select your domain from “Locations”
  - 1.7. Type GytpolSvc and click on Check Names
  - 1.8. Make sure this is the user and click OK
  
2. If there are Group Policy with “logon as a service” restriction:
  - 2.1. Go to a computer where Group Policy Management Console (GPMC) is installed (it is installed by default on all of the Domain Controllers)
  - 2.2. Open cmd as administrator and type **gpmc.msc**
  - 2.3. Go to the policy where the restriction is set and right click ▸ edit.
  - 2.4. Navigate to Computer Configuration ▸ Windows Settings ▸ Security Settings ▸ Local Policies ▸ User Right Assignment
  - 2.5. Double click on “Log on as a service”
  - 2.6. Click on “Add User or Group”
  - 2.7. Type GytpolSvc and click on Check Names
  - 2.8. Make sure this is the user and click OK

## Logon as a batch job

1. If there are no Group Policies with “logon as a batch job” restrictions, you might leave it as it is
  - 1.1. Go to a server where GYTPOL is installed
  - 1.2. Open cmd as administrator and type **gpedit.msc**
  - 1.3. Navigate to Computer Configuration ▸ Windows Settings ▸ Security Settings ▸ Local Policies ▸ User Right Assignment
  - 1.4. Double click on “Log on as a batch”
  - 1.5. Click on “Add User or Group”
  - 1.6. Select your domain from “Locations”
  - 1.7. Type GytpolSvc and click on Check Names
  - 1.8. Make sure this is the user and click OK

2. If there are Group Policy with “logon as a batch job” restriction:
  - 2.1. Go to a computer where Group Policy Management Console (GPMC) is installed (it is installed by default on all of the Domain Controllers)
  - 2.2. Open cmd as administrator and type **gpmc.msc**
  - 2.3. Go to the policy where the restriction is set and right click □ edit.
  - 2.4. Navigate to Computer Configuration □ Windows Settings □ Security Settings □ Local Policies □ User Right Assignment
  - 2.5. Double click on “Log on as a batch job”
  - 2.6. Click on “Add User or Group”
  - 2.7. Type GytpolSvc and click on Check Names
  - 2.8. Make sure this is the user and click OK

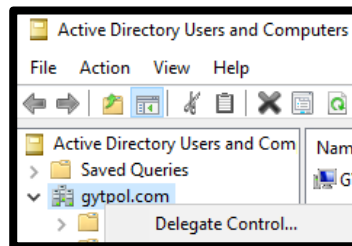
## DB Creator

1. Log in to the system using my\_domain\my\_account or the local system administrator.
2. Log in to SQL Server using administrator (sa) permissions or the local system administrator.
3. Expand the Security folder in the navigation tree.
4. Right-click the Logins folder and select New Login ...
5. Under General on the New Login dialog, complete the following actions:
  - 5.1. Select Windows Authentication.
  - 5.2. Click Search, enter a login name (for example, GytpolSvc), then click Check Names.
6. In the dialog, verify the resolved account my\_domain\GytpolSvc.
7. Under Server Roles, add the dbcreator role and click OK.
8. The new database user has sufficient privileges to install Server Automation.

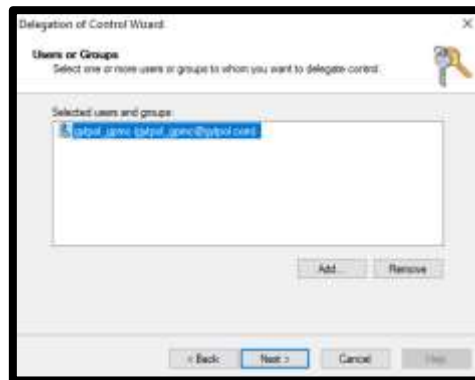
## GPMC Permission

### Active Directory Delegation – Group Policy Permission

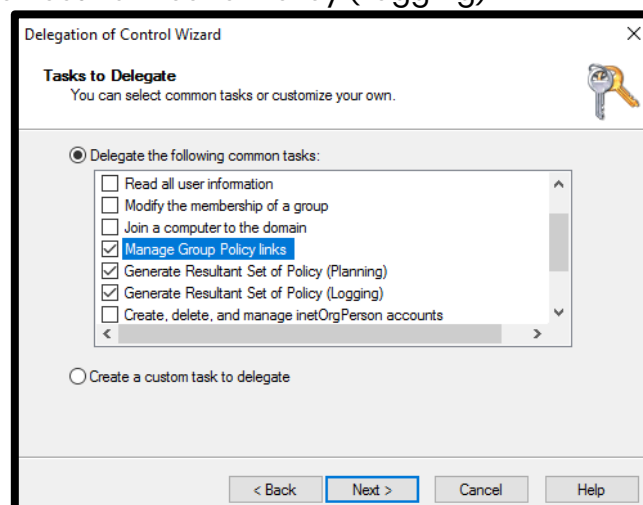
1. Open Active Directory Users and Computers
2. Right click on “yourDomain.com” → Delegation Control:



3. Click next → select Gytpol user (mentioned in the table below)



4. Click next → Under “Tasks to Delegate” Select the following:
  - a) Manage Group Policy links
  - b) Generate Resultant Set of Policy (Planning)
  - c) Generate Resultant Set of Policy (Logging)

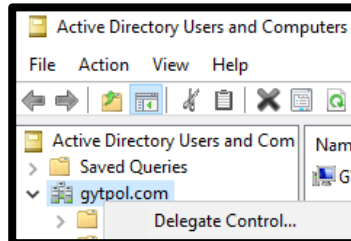




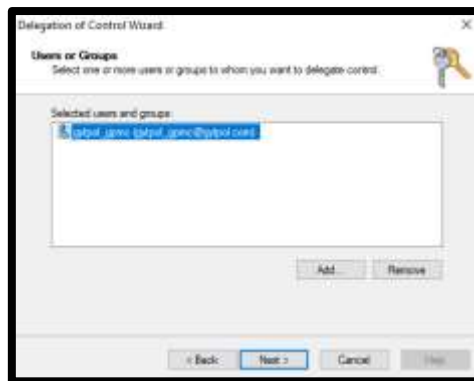
5. Click next and Finish

## Active Directory Delegation – AD Replication Permissions

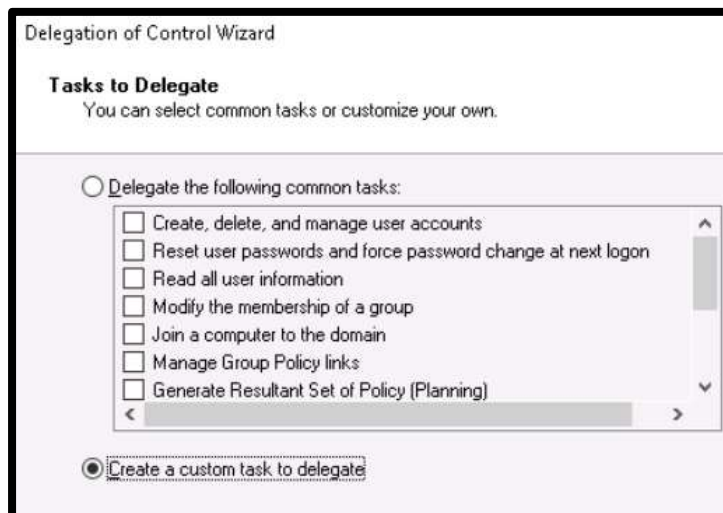
1. Open Active Directory Users and Computers
2. Right click on “yourDomain.com” → Delegation Control:



3. Click next → select Gytpol user (mentioned in the table below)



4. Click next → and choose “Create a custom task to delegation”



5. Click next → leave the default choice (This folder, existing objects in this folder, and creation of new objects in this folder)

## Delegation of Control Wizard

### Active Directory Object Type

Indicate the scope of the task you want to delegate.

Delegate control of:

This folder, existing objects in this folder, and creation of new objects in this folder

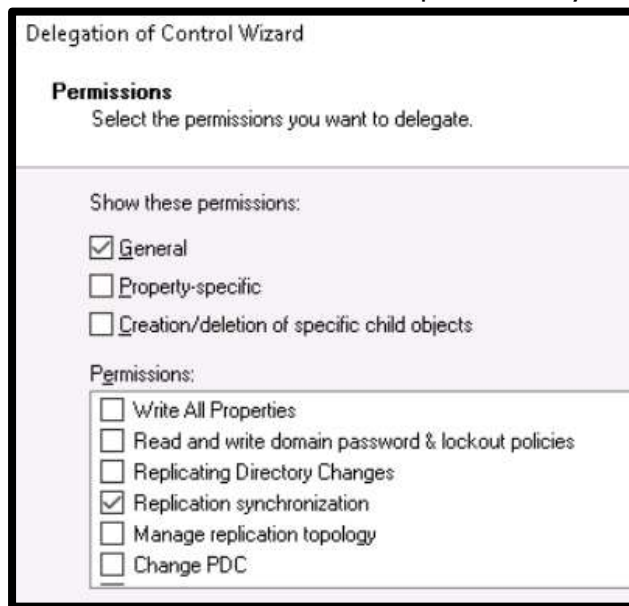
Only the following objects in the folder:

- account objects
- aCSResourceLimits objects
- addIn objects
- addType objects
- adminExtension objects
- applicationVersion objects

Create selected objects in this folder

Delete selected objects in this folder

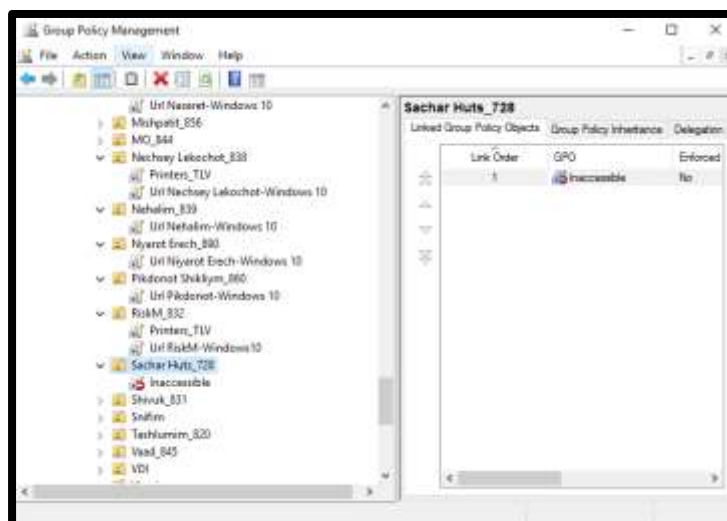
- Click next  check the “Replication synchronization”



- Click next  finish

## Group Policy Links Permissions

- From a server running GPMC (and is not the Domain Controller) – start the GPMC with GytpolSvc user
- Expand the tree and make sure the user can see all of the linked Group Policies:
- In case the user has “Inaccessible”:



- Open the GPMC with a privilege user  navigate to the OU with the Inaccessible group policy link (as a privilege user you should see the name

of the policy) □ click on that policy □ on the right pane navigate to “Delegation” tab

5. On the bottom of the delegation tab press “Add..” □ select GytpolSvc (or: Authenticated Users) □ click OK
6. In the window after leave it with **Read** permissions and press OK

Make sure you do not miss any Group Policy Object behind